



SHIP REPAIR DRYDOCKS



A Shipyard with a history in performing under pressure. Skilled workers, vast experience in all areas of ship repair. Ideal location. Let us take you on a journey from where it all began to the present!



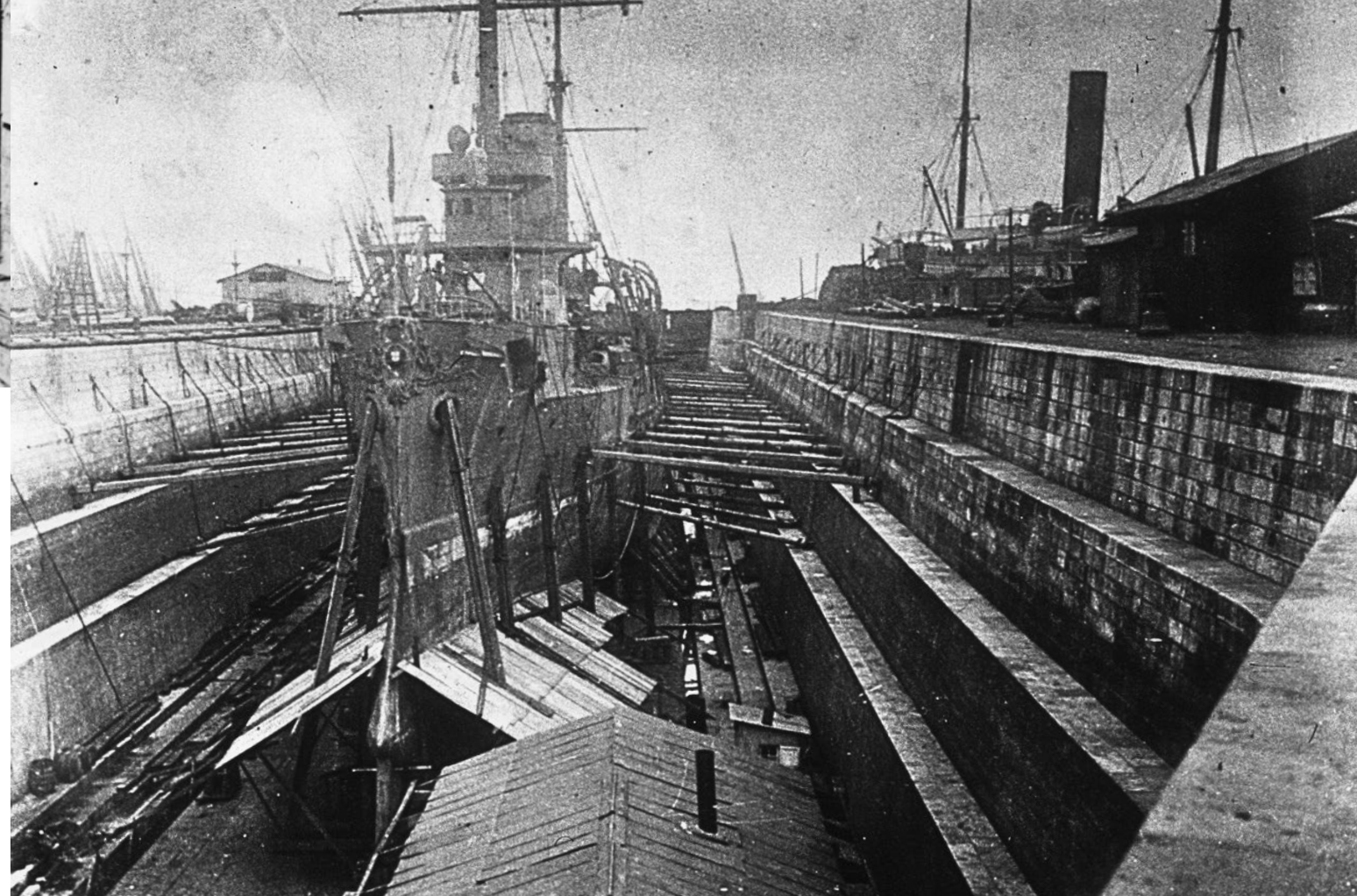
VESSELS WE SERVICE

Navalrocha services a wide variety of vessels including polar expedition vessels, car-ferries, tugboats, cargo-carriers, cruise ships, military vessels, livestock carriers, sailing vessels. In more recent years the yard has expanded into the LPG, LNG, product carrier and chemical carrier markets as well as seismic survey and ocean monitoring vessels.



HISTORY

Navalrocha Shipyard SA is a world -class ship repair facility located in the heart of Lisbon harbour on the north bank of the Tagus river and is one of the oldest infrastructures associated with the Naval Industry in the Tagus river estuary dating back to 1898.



History

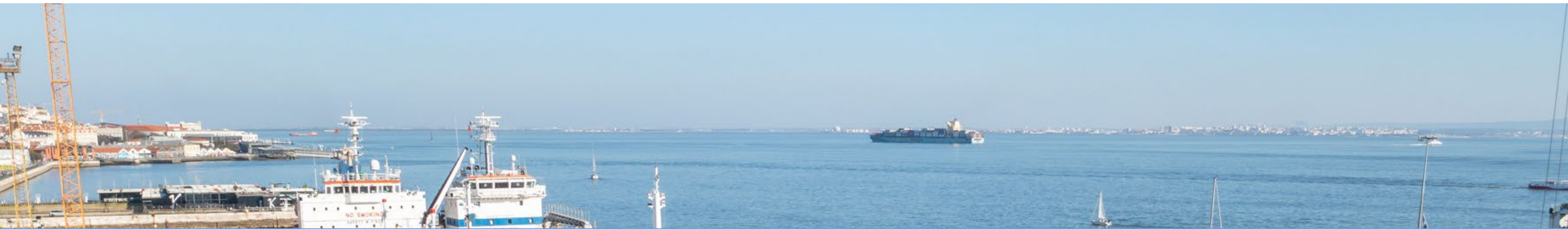
First decades of the 20th century.

In 1907 when the state regained control of the new port the infrastructure consisted in seven docks, with the correspondent technical apparel, a territory including 3500 m of ramps and embankments, 4700 m of piers, two dry docks, and over 14 000 m² of warehouse space (AGPL, 1938). According to some texts of the time, during the following decades less construction was done, the interventions were mainly the two new ship repair docks, more storage space and the conclusion of the pier of Santos.

The image of the port as it is known nowadays, started to be forged during this time (Costa, 2006). The separation between the city and the port became stronger and the difference of scale reduced the interaction between the citizens and the port.

The political climate during the 1910s and early 1920s affected as well the port development. Until the new regime gained power and a certain stability was found, there were not many relevant constructions. During the late 1920s and 1930s the new government pushed further port development. The third section, planned in the competition, and already designed in 1916, was finally under construction. The dry docks 3 and 4 for naval repair were built, and the Alcântara and Santos docks were also rebuilt. The construction quality of the first section of the port was far from ideal and different reinforcement works were necessary in the following years after its opening





BIG ENOUGH TO HANDLE IT
SMALL ENOUGH TO CARE





OUR MAIN AREAS OF BUSINESS



Cleaning, painting and blasting

Tank Cleaning

Piping

Insulation

Carpentry

Electrical, electronics and automation
repairs

Steelwork

Boiler repairs

Mechanical and machining works



We've got you covered

Blasting & Painting

At our facility, we employ state-of-the-art blasting techniques to remove rust, old paint, and marine debris, ensuring a clean surface for optimal coating adhesion. Our skilled technicians utilize environmentally friendly abrasive materials and equipment to effectively prepare the ship's surface, promoting longevity and durability.

- Wet Grit Blasting
- Hydro Blasting
- Surface Preparation
- Application of protective coatings
- Anti-corrosive coatings
- Anti-fouling coatings including silicone base paint
- Topside painting

Steelwork

Our steel shop is equipped with skilled craftsmen capable of handling a wide range of steel & stainless steel fabrication and repair tasks. Whether it's repairing hull damage, replacing structural components, or fabricating custom fittings, we have the expertise to deliver exceptional results.

Our steel department services include:

- Hull repairs and modifications
- Structural Fabrication
- Bulkhead construction and repair
- Crane and davit repairs
- Deck place replacement
- Machinery foundation fabrication
- Aluminium work
- Weld repairs and modifications

Mechanical

Welcome to our ship repair yard, where precision meets performance in our specialized mechanical department. With a dedicated team of experienced engineers and technicians, we offer comprehensive mechanical services tailored to optimize the efficiency and reliability of maritime machinery and systems.

Mechanical Department Services:

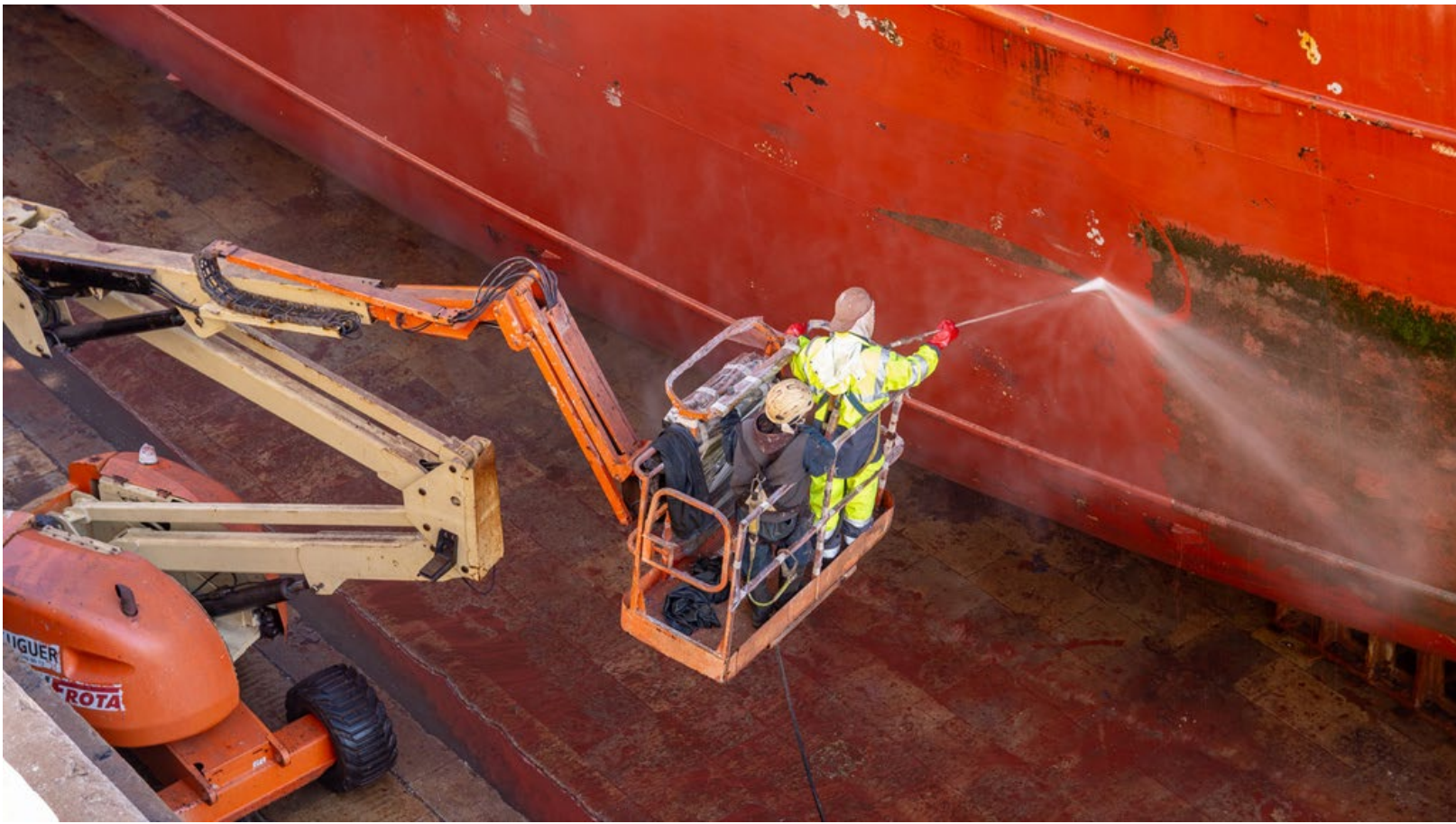
Our mechanical department is equipped to handle a wide range of repair, maintenance, and installation tasks, ensuring the smooth operation of essential shipboard equipment. From propulsion systems to auxiliary machinery, we have the expertise to address all your mechanical needs.

Electrical

With a team of highly skilled electricians and engineers, we provide comprehensive electrical solutions tailored to ensure the safety, reliability, and efficiency of your vessel's electrical systems.

Electrical Department Services:

Our electrical department offers a wide range of services to address the diverse electrical needs of ships, from routine maintenance to complex installations and repairs. We understand the critical role that electrical systems play in maritime operations, and we are committed to delivering superior service to keep your vessel running smoothly.





LOCATION IS IMPORTANT

Shipyard is located in the heart of Lisbon harbor
(north bank of the Tagus River)

An ideal location for vessels trading and passing
through Atlantic and Mediterranean waters.

CLOSE TO AIRPORT, TRAINS,
BUSES, TRAMS & TOURIST
ATTRACTIONS



OUR FACILITIES



Lifting equipment

Overhead cranes:

3 8t each

1 3t

Cranes on rails:

1 8t 41m

Fixed cranes:

1 12t x 52m

1 6t x 50 m

1 3t x 45m

1 4t x 5m / 2,4 x 30 m

Under cover workshops

(2800 m²)

Mechanical shop:

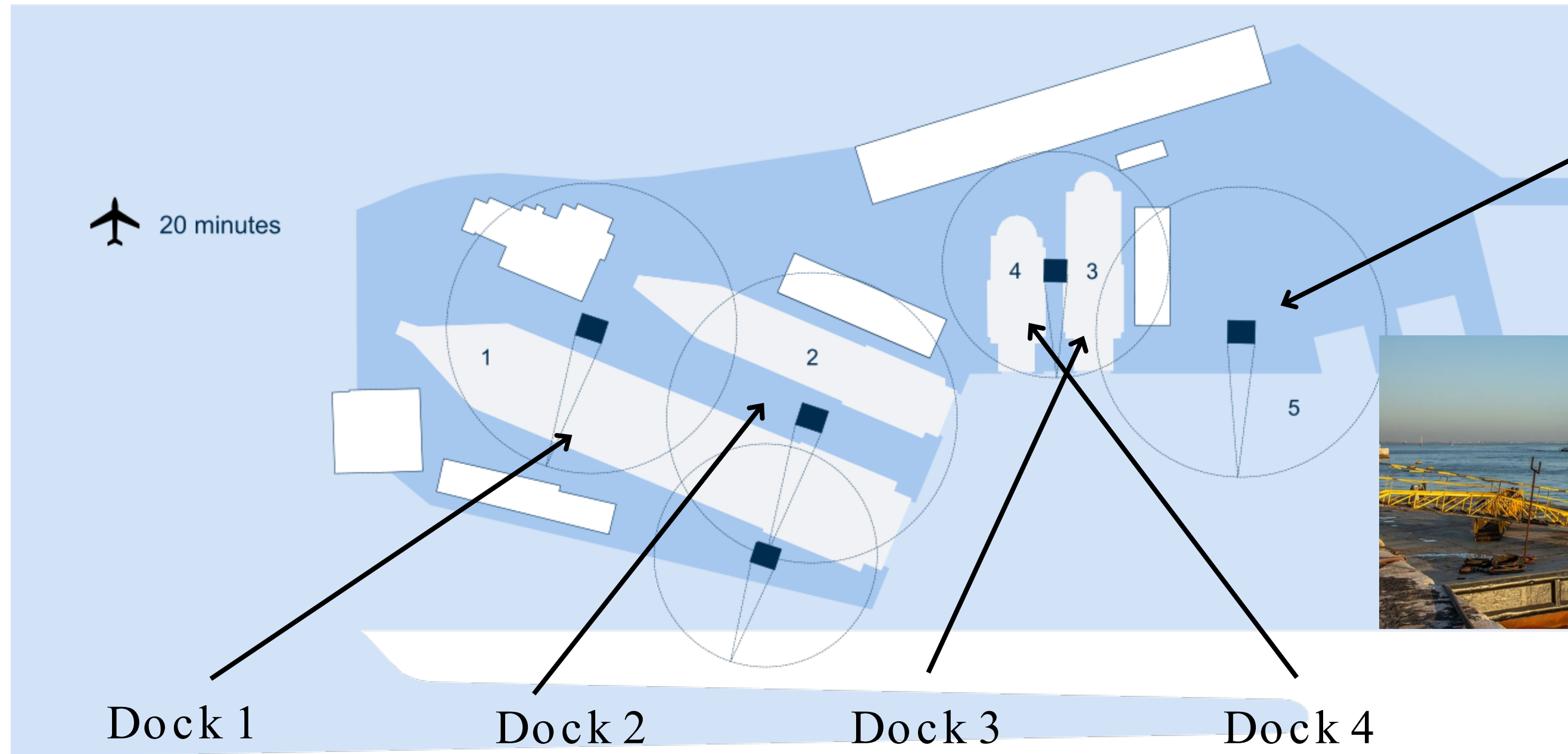
1000 m²

Plate & pipe shop:

1800 m²

Auxiliary shops:

carpenters, riggers, scaffolding, fire brigade.



Floating Pier

Vessel length for floating pier:
120 m/draft:
5,50 m



Dock 1
Length between gate and dock head:
173,50m/width of entrance: 22,10m: max draft 7,6m

Dock 2
Length between gate and dock head:
104,00m/width of entrance: 12,40 m: max draft 5,5m

Dock 3
Length between gate and dock head:
63,8m/width of entrance 12m

Dock 4
Length between gate and dock head:
48,2m/Width of entrance 11m

Utilities Available

Fresh water: 5,0 7,0 kg/cm²
Fire fighting: 7,0 10,0 Kg/cm²
Ballast s.w.: 7,0 Kg/cm²
Electrical power: 440 V/60 Hz
380 V/220 Hz/50 Hz
220 V/110 VDC
Sewage connection




NAVALROCHA, SA.

FAQ



What type of vessels does Navalrocha accommodate?

Navalrocha manages a wide variety of vessels including livestock carriers, polar expedition vessels, car-ferries, tugboats, cargo-carriers, cruise ships, military vessels, sailing vessels. In more recent years the yard has expanded into the LPG, LNG, product carrier and chemical carrier markets as well as seismic survey and ocean monitoring vessels.

What is the maximum size vessel which the yard can accommodate in both dry dock and pier side locations?

Navalrocha can accommodate vessels up 173,50m/width 22,10m, draft 7,6m, in our largest drydock and vessels of unlimited size in our pier side facility.

What advantages does Navalrocha offer its clients?

Navalrocha offers a series of unique benefits. Firstly, our strategic location provides ideal ship repair and conversion conditions, with more than 300 days of sunshine every year. Being in the heart of Lisbon we also have vibrant and cosmopolitan surroundings for crew to disembark. In addition, we can offer faster and more cost-effective solutions to ship companies looking to avoid the congested Strait of Gibraltar or Mediterranean. Meanwhile, our location is also particularly attractive to ships operating in West and North African coasts with a ready supply of spare parts providing a significant advantage over competitors.

FAQ



What are the yard's facilities?

The scale of our operation provides us with a strong competitive advantage with three dedicated drydocks and a further repair pier. This ensures every project receives our full attention with each client benefitting from priority treatment from a 70-strong workforce and cluster of specialist marine service partners located on site.

What are the yard's key qualities?

Navalrocha takes great pride in its engineering experience and expertise, with a strong track record of delivering fast, reliable, and efficient services at competitive prices. These key qualities have ensured high levels of client satisfaction and repeat work.

What services does the yard deliver?

Navalrocha provides a comprehensive ship repair service that offers a complete range of turnkey solutions. The company works in conjunction with a network of trusted partners, who have offices located within the yard. The key services offered by Navalrocha include steelwork, welding, mechanical and machining work, boiler repairs, pipework, cleaning, painting and blasting, electrical and automation work, and green technologies. The company also provides additional services such as tank cleaning, insulation work, and carpentry.



CONTACTS

No job is too small
please contact us for quotation

Website : www.navalrocha.pt

Email : navalrocha@navalrocha.pt

Address : Rua da Cintura do Porto de Lisboa, Estaleiro da Rocha Conde de Óbidos, 1350-352 Lisboa



+351 - 2 1 3 - 9 1 5 9 0 0

GPS: 38.703371, -9.161505



THANK YOU

Please contact us for more information we look forwards to your visit!